

SPARE PARTS SECTION

Hydraulic Panel Beater Kit

Model PBK-10H

Order Code A366

Edition No : PBK-10H-4

Date of Issue : 04/2021

The following section covers the spare parts diagrams and lists that were current at the time this manual was originally printed. Due to continuous improvements of the machine, changes may be made at any time without notification.

HOW TO ORDER SPARE PARTS

1. Have your machines **model number, serial number & date of manufacture** on hand, these can be found on the specification plate mounted on the machine
2. A scanned copy of your parts list/diagram with required spare part/s identified.

NOTE: SOME PARTS MAY ONLY BE AVAILABLE AS AN ASSEMBLY

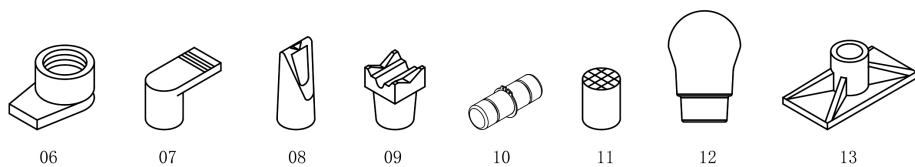
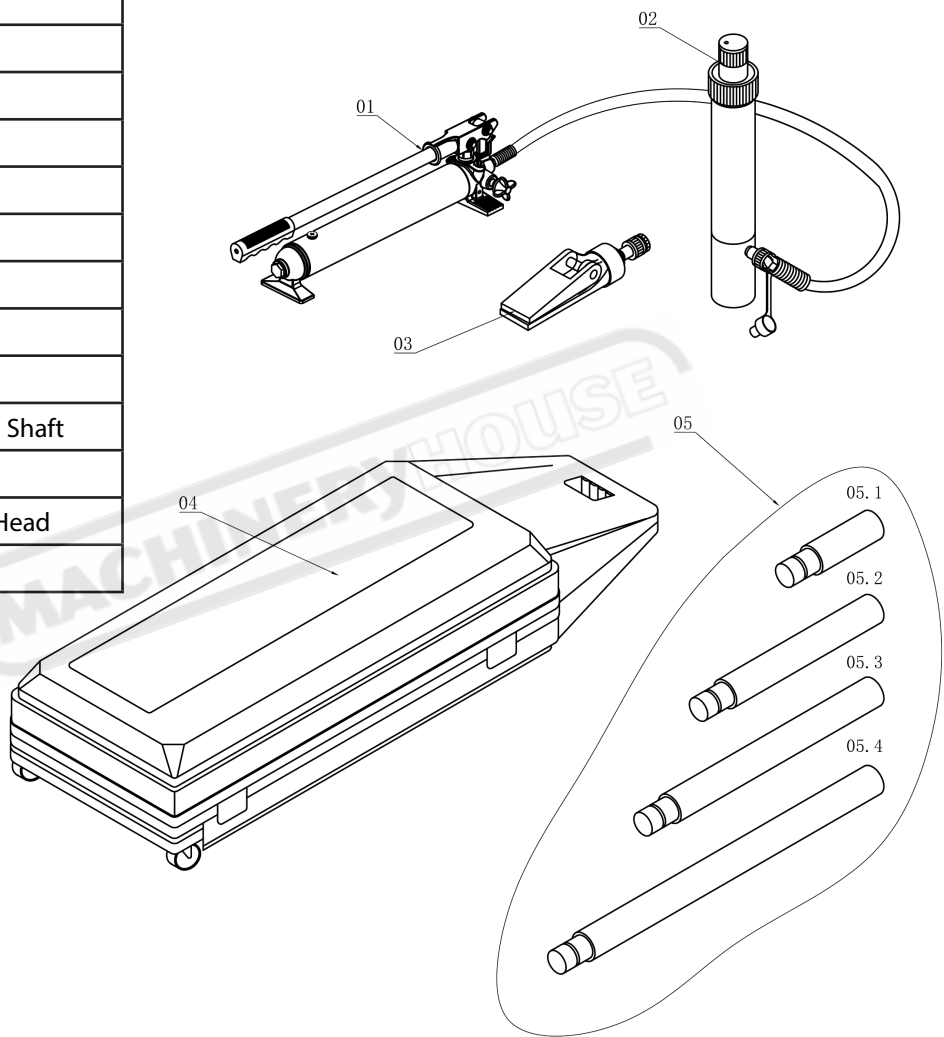
3. Go to www.machineryhouse.com.au/contactus and fill out the inquiry form attaching a copy of scanned parts list.

CONTENTS

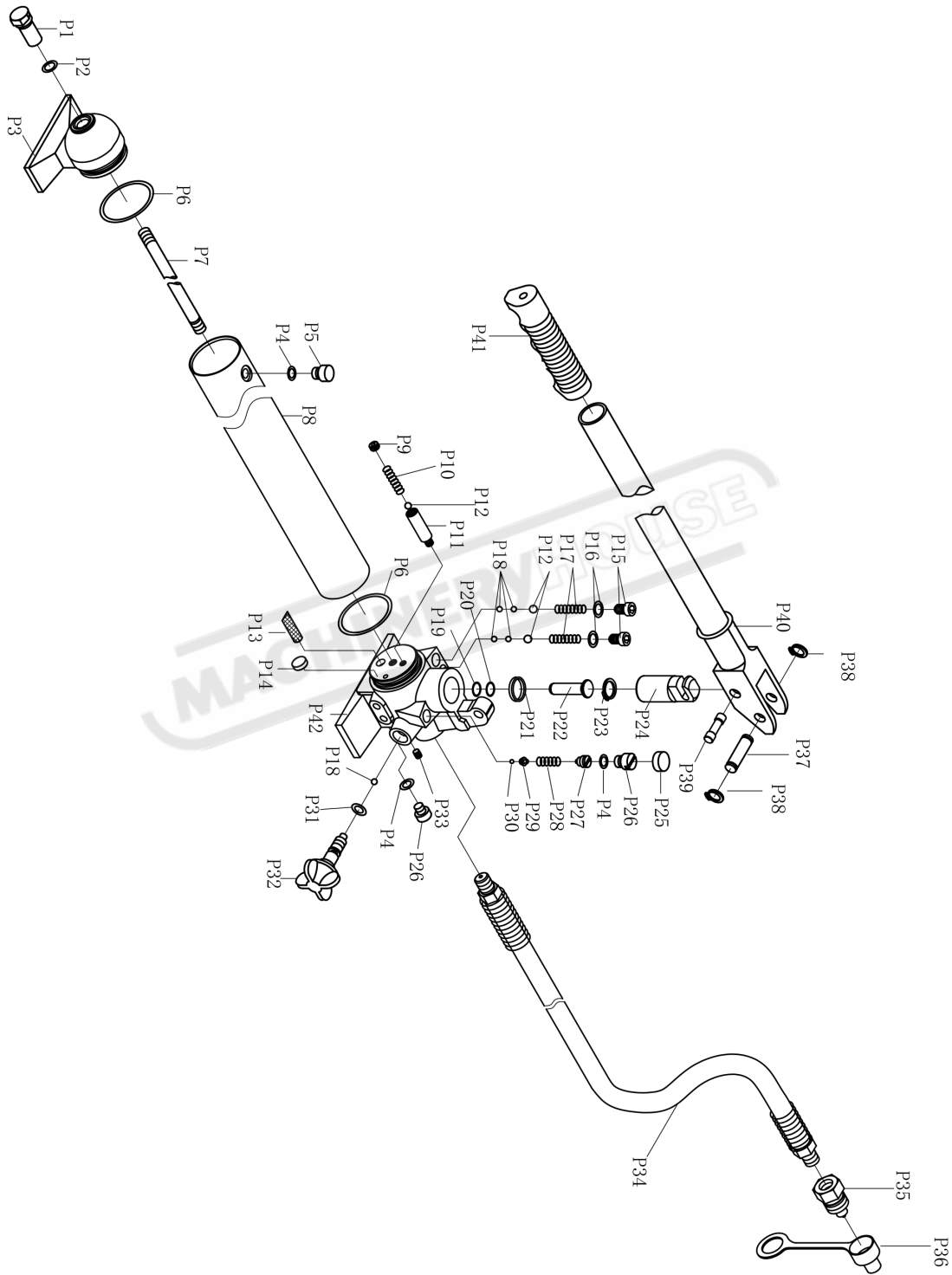
PBR-10H Parts List.....	10
10 Tonne Pump Assembly Diagram.....	11
10 Tonne Pump Assembly List.....	12
10 Tonne Ram Assembly Diagram.....	13
10 Tonne Ram Assembly List.....	14
0.5 Spreader Assembly.....	15

PBR-10H PARTS LIST

NO.	DESCRIPTION
01	Pump Parts
02	Cylinder Parts
03	Spreader
04	Blow Mould Case
05-1	I Component
05-2	II Component
05-3	III Component
05-4	IV Component
06	Hanging Foot
07	Flat Top
08	Wedge Head
09	Square Head
10	Active Connection Shaft
11	Round Head
12	Spherical Rubber Head
13	Ram Base



10 TONNE PUMP ASSEMBLY DIAGRAM



NOTE: SUPPLIED AS AN ASSEMBLY. INDIVIDUAL PARTS NOT AVAILABLE

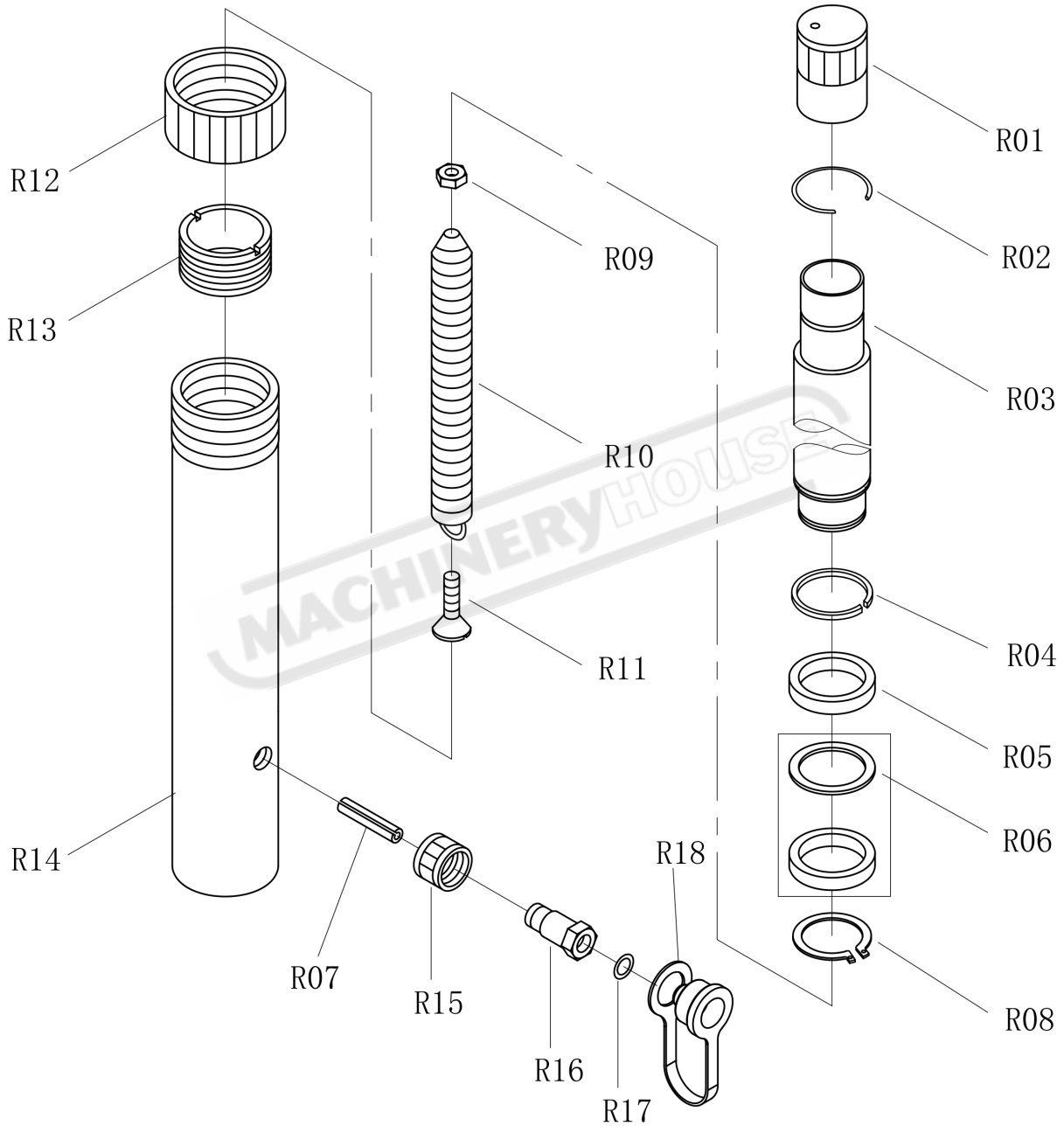
OPERATION MANUAL

10 TONNE PUMP ASSEMBLY LIST

NO.	DESCRIPTION	Qty.	NO.	DESCRIPTION	Qty.
P1	Lever screw	1	P23	Retaining Ring	1
P2	O-rings	1	P24	Large Pump Bore	1
P3	The back cover	1	P25	Decorative caps	1
P4	O-rings	3	P26	Plug Screw	2
P5	Refueling Screw	1	P27	Pressure-regulating Screw	1
P6	O-rings	2	P28	Pressure-regulating Spring	1
P7	Tie rod	1	P29	Pressure-regulating Ball Seat	1
P8	Oil barrel	1	P30	Steel Ball	1
P9	Pressure Regulating Screw	1	P31	O-rings	1
P10	Low Pressure Regulator Spring	1	P32	Drain Valve Assembly	1
P11	Low Pressure Regulator	1	P33	Screw	1
P12	Steel Ball	3	P34	High Pressure Hose Assembly	1
P13	Oil Filter Screen	1	P35	Hose Connector Assembly	1
P14	Magnetic Steel	1	P36	Tubing Shield	1
P15	Plug Screw	1	P37	Pump Body Pin	1
P16	Copper pad	1	P38	Shaft Retaining Ring	2
P17	Oil Springs	1	P39	Pump Bore Pin	1
P18	Steel Ball	5	P40	Handle Assembly	1
P19	O-rings	1	P41	Handle Cover	1
P20	Small Pump PTFE Gasket	1	P42	Pump Body	1
P21	U-rings	1			
P22	Small Pump Bore	1			

NOTE: SUPPLIED AS AN ASSEMBLY. INDIVIDUAL PARTS NOT AVAILABLE

10 TONNE RAM ASSEMBLY DIAGRAM



NOTE: SUPPLIED AS AN ASSEMBLY. INDIVIDUAL PARTS NOT AVAILABLE

OPERATION MANUAL

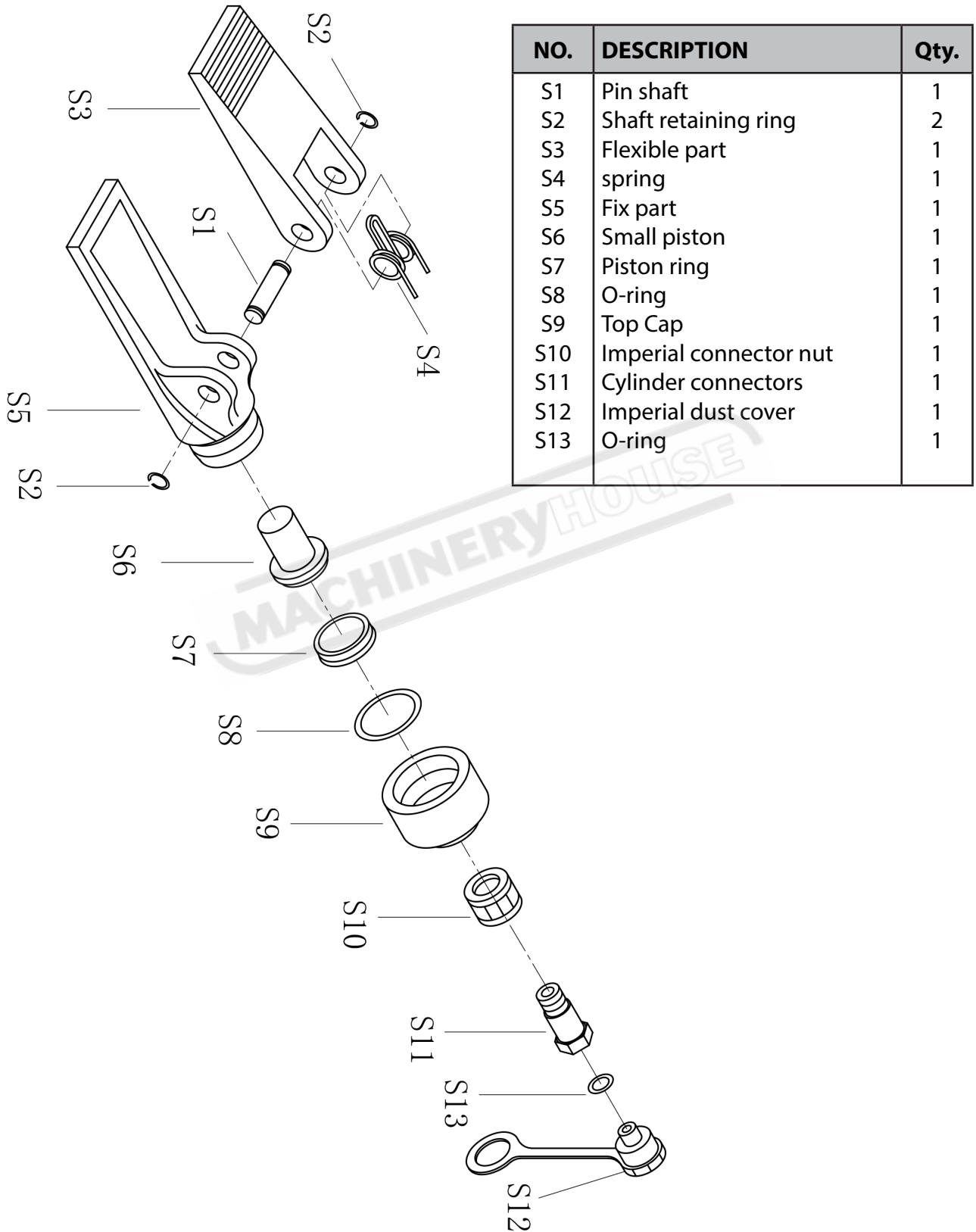
10 TONNE RAM ASSEMBLY LIST

NO.	DESCRIPTION	Qty.	NO.	DESCRIPTION	Qty.
R01	Piston Rod Protection	1	R10	Tension Spring	1
R02	Connecting Shaft Collar	1	R11	Screw	1
R03	Piston Rod	1	R12	Cylinder Sleeve	1
R04	Wire Spacing Ring	1	R13	Spacing Ring	1
R05	Washer	1	R14	Cylinder Components	1
R06	U-ring	1	R15	Connector Nut	1
R07	Elastic Straight Pins	1	R16	Cylinder Connectors Components	1
R08	Shaft Retaining Ring	1	R17	O-ring	1
R09	Screw	1	R18	Dust Cap	1

NOTE: SUPPLIED AS AN ASSEMBLY. INDIVIDUAL PARTS NOT AVAILABLE

MACHINERYHOUSE

0.5 TONNE SPREADER ASSEMBLY



NO.	DESCRIPTION	Qty.
S1	Pin shaft	1
S2	Shaft retaining ring	2
S3	Flexible part	1
S4	spring	1
S5	Fix part	1
S6	Small piston	1
S7	Piston ring	1
S8	O-ring	1
S9	Top Cap	1
S10	Imperial connector nut	1
S11	Cylinder connectors	1
S12	Imperial dust cover	1
S13	O-ring	1